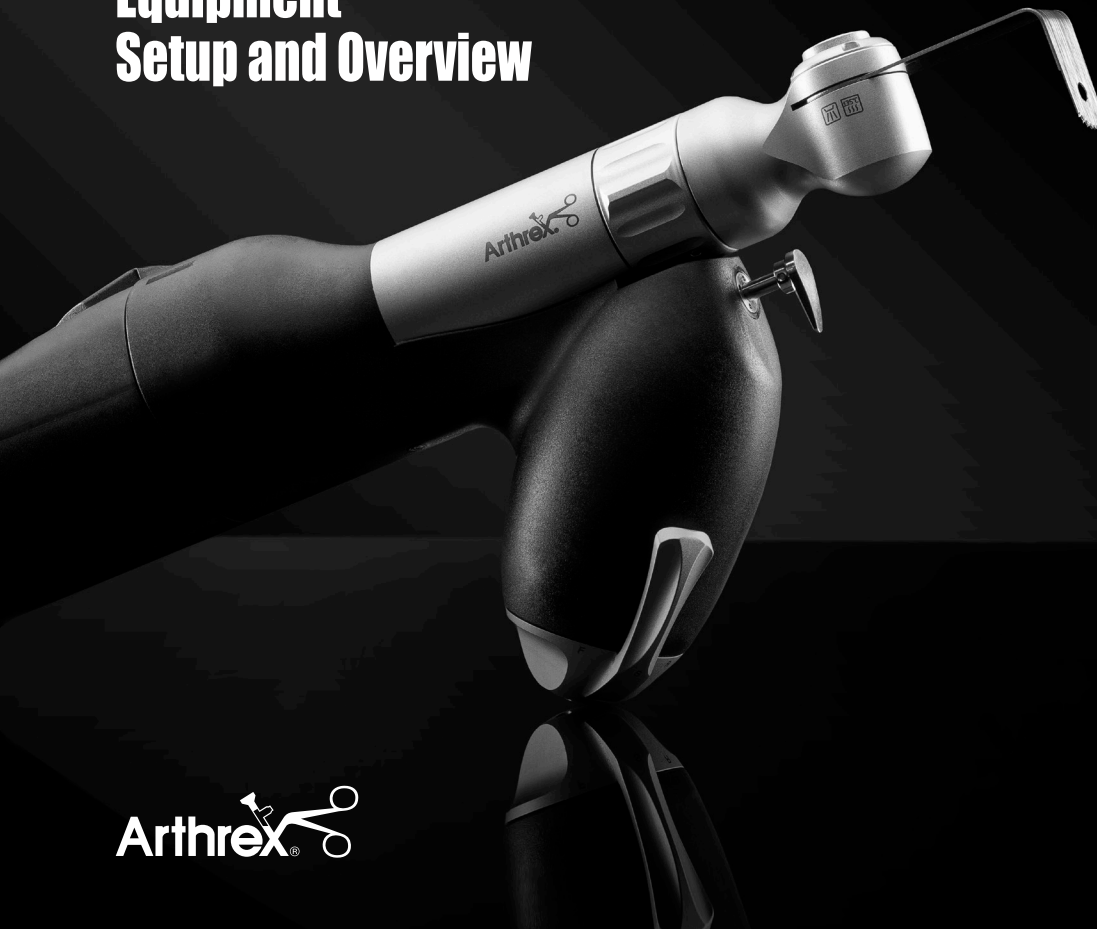


# DrillSaw Mini 300™ Battery-Powered System

## Equipment Setup and Overview



Inserting the battery

---

Assembling/removing the battery housing

Switching forward/reverse modes

---

Assembling/removing the attachments

---

Sagittal saw attachment

---

Reciprocating saw attachment

Chuck attachment

---

Quick connects

Burring attachments

---

Pin/wire driver attachment

Removing the battery

---

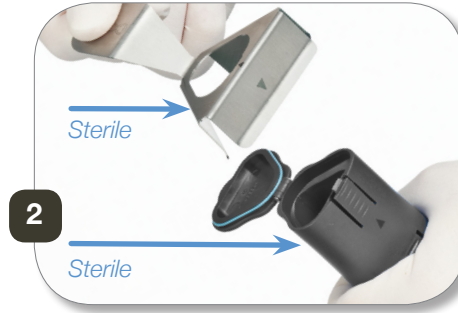
Sterilization and general tips



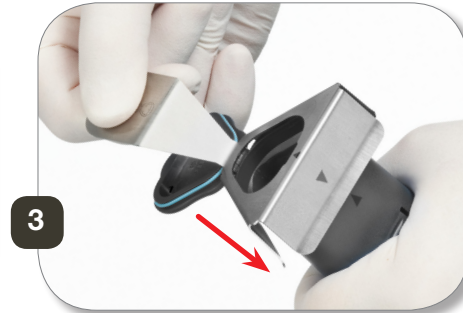
# Inserting the battery



Press the locking device.

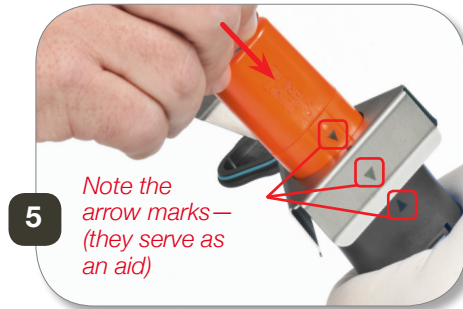


Open the battery housing and place the sterile plate on top.



*This document is not intended to replace or supersede the DFU for the DrillSaw Mini 300™ Power System. It is only a tool to reference common questions related to these products (DFU-0023). For a full listing of instructions and warnings, please refer to the Instructions for Use: <http://www.Arthrex.com>.*

# Inserting the battery



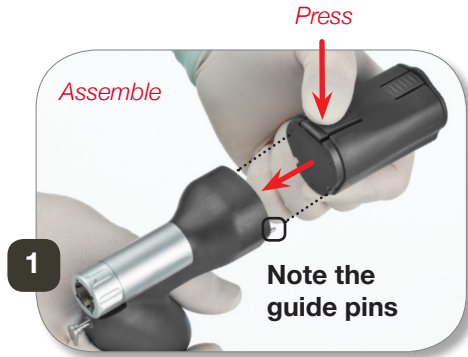
Push the unsterile, fully charged battery as far as it will go into the battery housing.  
Push the loop on the battery down.



Remove the transfer plate.

Close the battery housing until it audibly snaps into place.

# Assembling/removing the battery housing



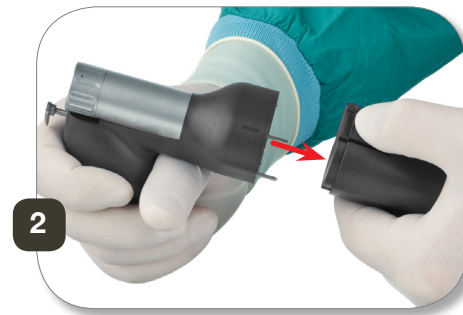
Align the battery housing according to the guide pins and press the locking device.



Push the battery housing in a straight line to the end stop on the handpiece, while keeping the locking device pressed.

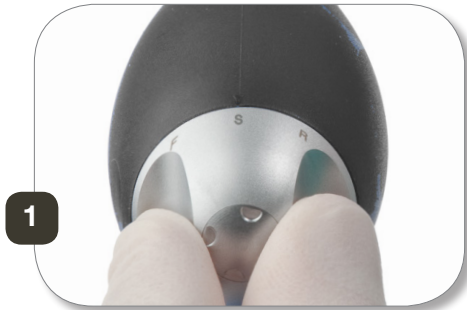


Press the locking device.

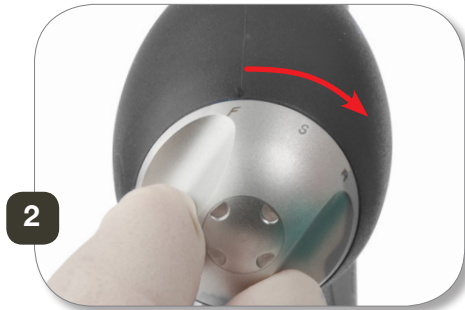


Pull the battery housing in a straight line off of the handpiece.

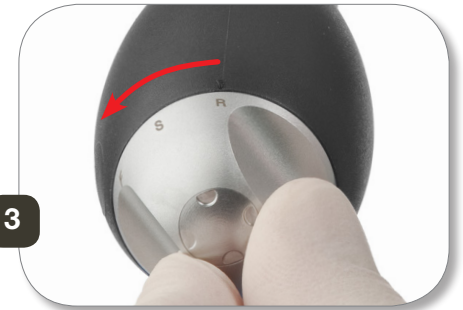
# Switching forward and reverse modes



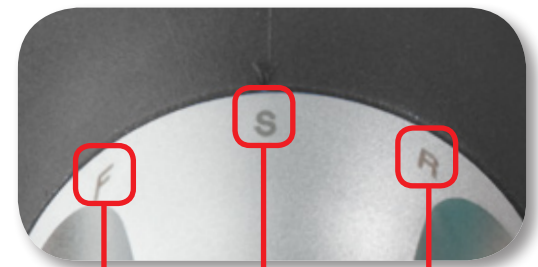
Safe/Off position (S or O)



Forward mode (F)



Reverse mode (R)

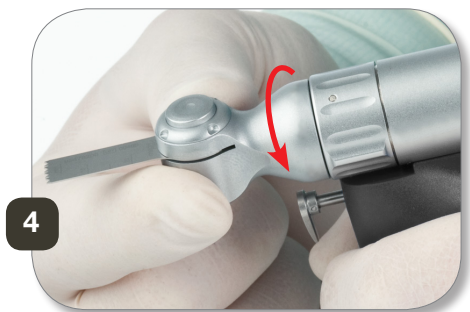


Forward mode    Safe/Off position    Reverse mode

# Assembling the attachments



Insert the position pins of the slightly twisted attachment into the recesses of the handpiece.



Turn the attachment until it audibly snaps into place.

# Removing the attachments



Turn the handpiece chuck mechanism.

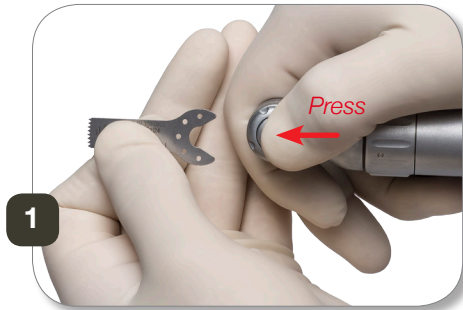


Pull the attachment off.

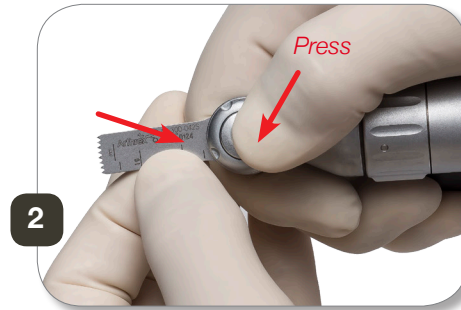
# Sagittal saw attachment



AR-300SAG



Press the push button on the attachment.



Push the saw in as far as it will go.



Note that the saw audibly snaps into place and check that the connection is secure by pulling in an axial direction.



# Reciprocating saw attachment



AR-300SR



**Flat shaft**



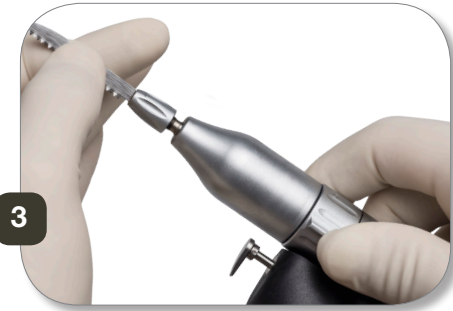
Open the attachment chuck mechanism. Push the saw in and keep turning it until you can feel it snap into place.



**Round shaft**



Close the chucking system.



Check that the connection is secure by pulling in an axial direction.

# Pin/wire driver attachments



Pull the lever of the wire driver back **completely** and keep it pulled.



Insert the wire.



Release the lever to fix the wire in place.

**TIP:** Lever pulled = wire not fixed

Lever not pulled = wire fixed

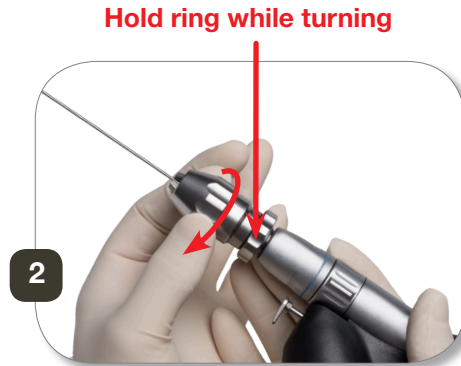


The AR-300CA Cannulated Adapter can be used for pins and wires longer than 6 in.

# Chuck attachment



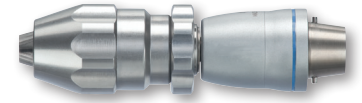
Insert the drill bit into the open drilling chuck.



Fix the drill bit in the drilling chuck and verify the connection is secure by pulling in an axial direction.



AR-300DK30



AR-300DK45

*Note: May use 4 in × 4 in (sterile cloth) to prevent glove damage.*

# Quick connects



AR-300DAO-2



Pull the collar back to open the attachment.



Insert the rotating instrument and keep turning it until it snaps into place. Release the collar and check that the connection is secure by pulling in an axial direction.



# Burring attachment



AR-300B



Open the attachment chuck mechanism and insert the rotary instrument.



Close the chucking system and note the corresponding marks on the attachment. Check that the connection is secure by pulling in an axial direction.

# Removing the battery



Open the battery housing by pressing the locking device.



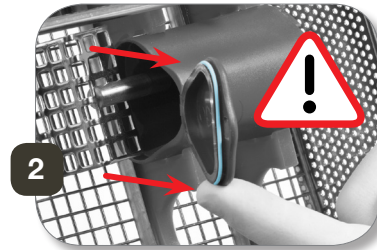
Remove the battery by pulling on the handle in an axial direction.



# Sterilization



1 Do not wash or sterilize the batteries.



2 Only wash or sterilize the battery housing when **open** and empty.



3 Only use the Arthrex autoclave basket (V-300T) or instrument case (AR-300C) for processing.



Arthrex recommends sterilization in accordance with EN 285/EN 13060, class B sterilization holding time a minimum of 4 minutes at 273°F (134°C) (drying time of at least 15 minutes).

No lubrication necessary after processing.

# General tips

## Li-Ion Battery

The batteries can remain in the charging station until the next surgery. They can also be stored fully charged next to the charging station.

**No self-discharge!**



**Maintenance-free – DO NOT OIL!**



**Cleaning, disinfection, and drying**

- All system components with this symbol can be cleaned and disinfected in a thermo washer disinfector.
- Only place the attachment in the thermo washer disinfector in an upright position.
- Do not place the handpiece, the battery housing, or the attachments in the ultrasonic bath.
- Arrange for sufficient drying after the thermo disinfection.





*This description of technique is provided as an educational tool and clinical aid to assist properly licensed medical professionals in the usage of specific Arthrex products. As part of this professional usage, the medical professional must use their professional judgment in making any final determinations in product usage and technique. In doing so, the medical professional should rely on their own training and experience and should conduct a thorough review of pertinent medical literature and the product's Directions For Use. Postoperative management is patient specific and dependent on the treating professional's assessment. Individual results will vary and not all patients will experience the same postoperative activity level or outcomes.*

View U.S. Patent information at [www.arthrex.com/corporate/virtual-patent-marking](http://www.arthrex.com/corporate/virtual-patent-marking)

© 2018 Arthrex, Inc. All rights reserved. LII-00048-EN\_B