

Compression FT Screw System

2.5 Micro, 3.5 Mini, 4.0 Standard, 5.0 Large, and 7.0 X-Large



Arthrex[®]
Vet Systems

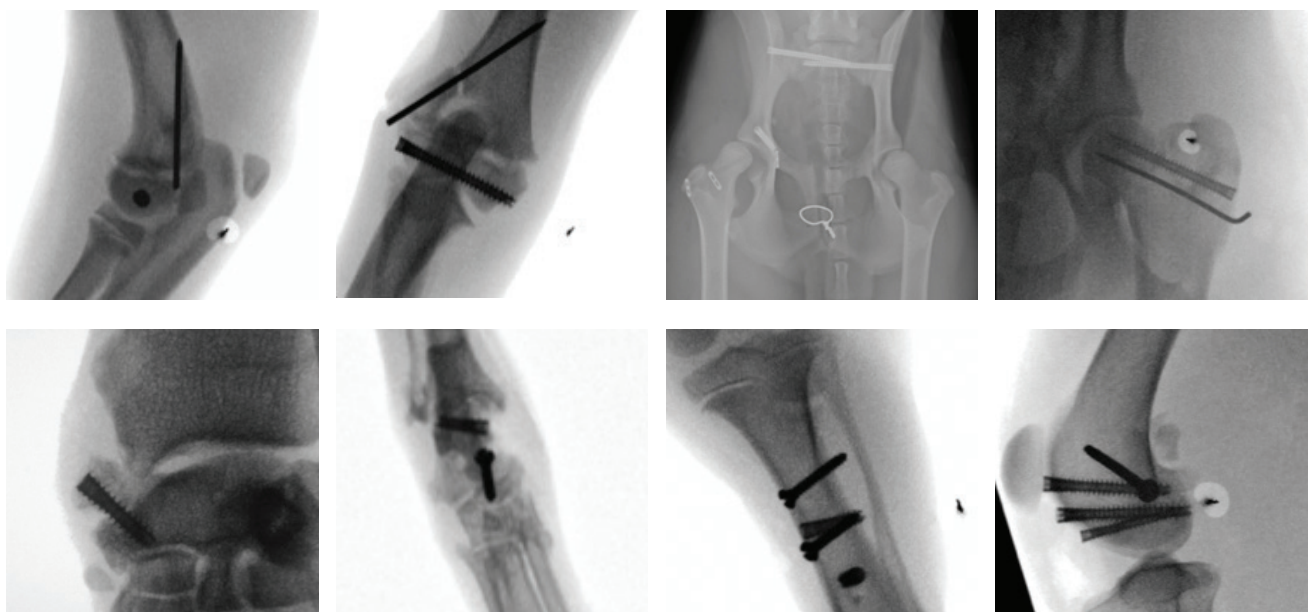
Features and Benefits



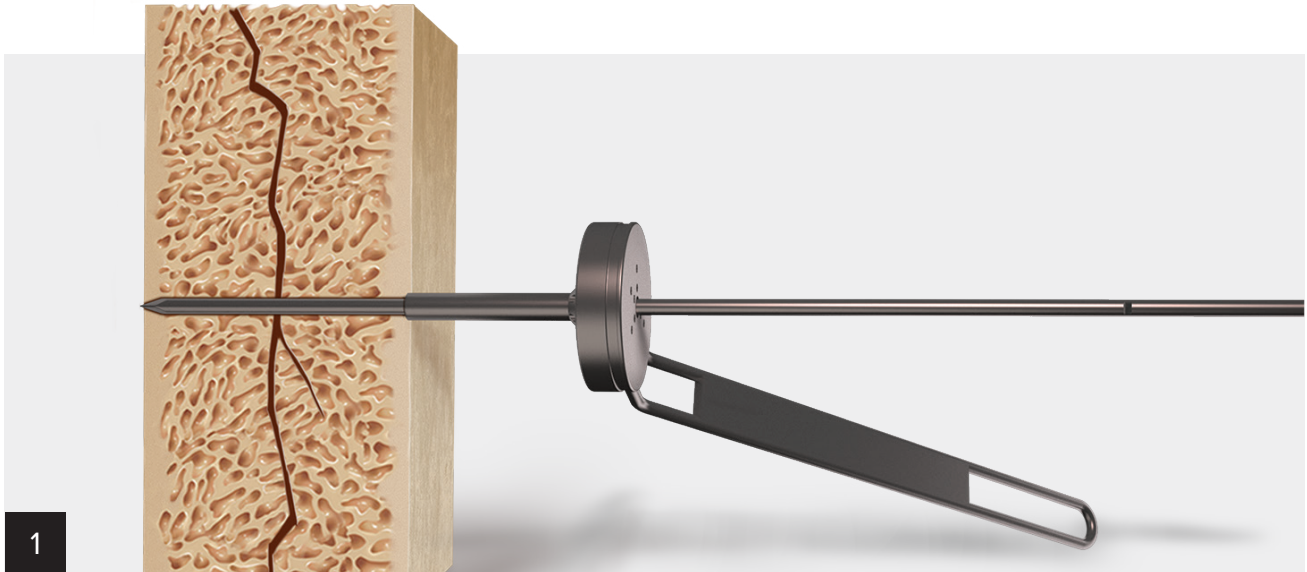
The headless titanium 2.5 Micro, 3.5 Mini, 4.0 Standard, 5.0 Large, and 7.0 X-Large Compression FT screws can be used for a wide range of indications in veterinary surgery. They are intended for repairing intra-articular and extra-articular fractures, SI luxations, inter-fragmentary compression in long-bone fractures, small fragment avulsions, arthrodesis and osteotomy compression. The variable-stepped thread pitch, headless design reduces the risk of profile complications, provides compression, and allows for simplified insertion. With these screws, surgeons can now achieve zero-profile stable fixation. From osteotomy compression to fracture management, the Headless Compression FT screws provide excellent compression and holding power. Accurate screw placement can be ensured by using the cannulated instrumentation in the set. The ability to apply the Headless Compression FT screw percutaneously makes it an outstanding option for executing minimally invasive osteosynthesis.

- **Variable-Stepped Thread Pitch** – Wider thread pitch at the tip of the screw enters the bone faster than each trailing thread, compressing the fragments progressively as the screw is advanced.
- **Headless** – Titanium screws can be implanted intra-articularly and extra-articularly with minimal risk of impingement or soft-tissue irritation.
- **Self-tapping Flutes** – Two sets of cutting flutes ease insertion after drilling and facilitate efficient OR time.
- **Multiple Screw Options** – Including 2.5, 3.5, 4.0, 5.0, and 7.0
- **Cannulated** – Assists accurate placement for both percutaneous and open procedures.
- **Improved Torque Transmission** – Hexalobe recess in 3.5, 4.0, 5.0, and 7.0 Compression FT screws and hex drive for 2.5 screw.

Indications



Compression FT Screw System



Establish the entry point for fixation and introduce the appropriate guidewire across the fracture or fusion site. Confirm the accurate wire placement position and appropriate depth under imaging.

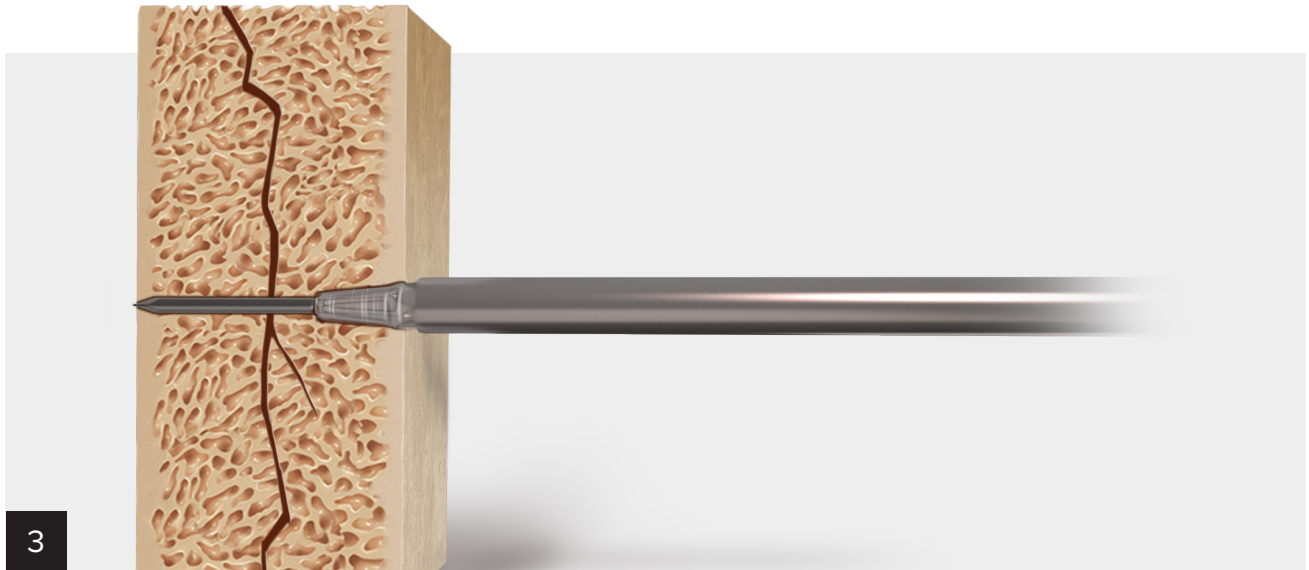
Note: A parallel drill guide is available to aid in wire placement and protect soft tissues during guidewire placement. If the fragment is unstable, it may be helpful to place a second parallel guidewire, using the parallel drill guide to stabilize and help prevent rotation of the fragment.



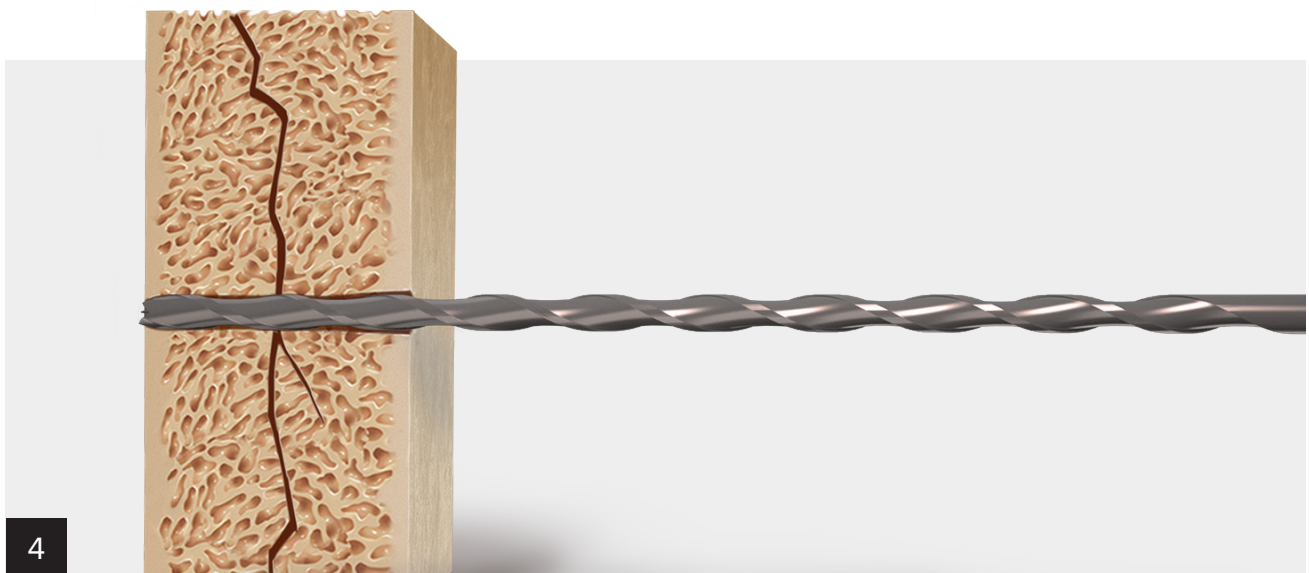
Measure the initial guidewire length using the depth device. It may be necessary to subtract from this length if the desired screw placement is to be buried beneath the bone surface and to account for compression achieved.

After measuring the appropriate screw depth, advance the guidewire through the far cortex of the operative site to minimize the risk of accidental withdrawal of the guidewire while drilling.

Compression FT Screw System



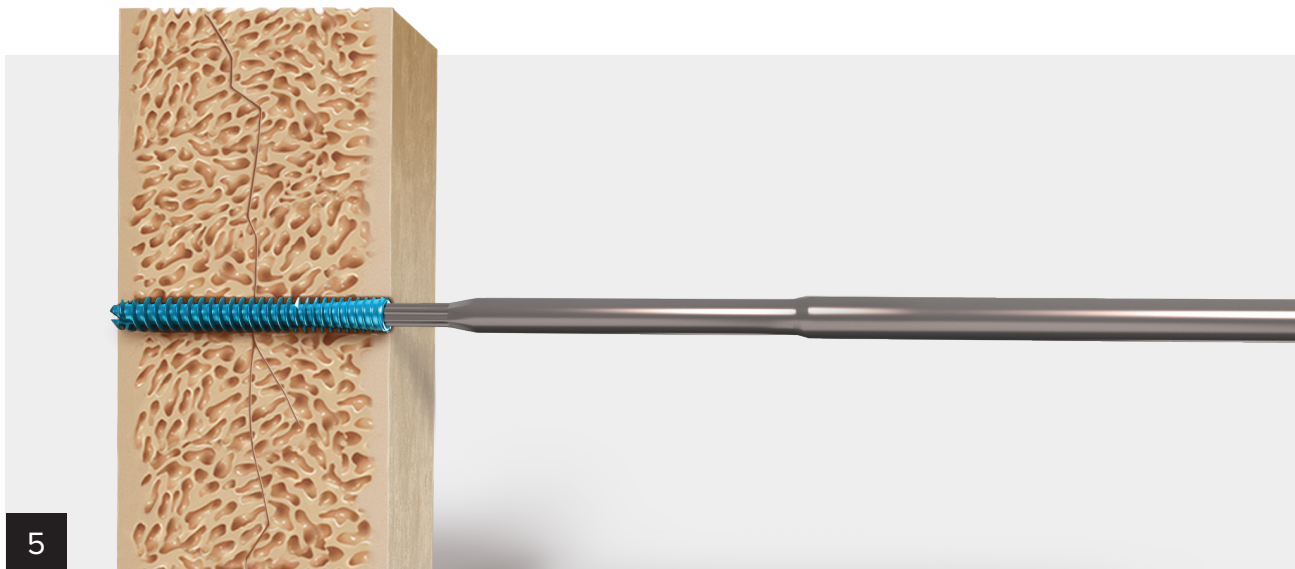
Use the appropriate size profile drill over the guidewire to break the cortical bone layer. Drill to the laser line for flush screw head prominence or hard stop to countersink screw head 2 mm.



The appropriately sized straight drill bit is used to ream the entire length of the selected screw path. It is important to drill the entire length to prevent distraction of distal fragments.

Use the 2.0 mm straight, cannulated drill bit for the 2.5 Micro Compression FT™ screws and the 2.7 mm straight, cannulated drill bit for the 3.5 Mini Compression FT™ screws. Use the 3.2 mm straight, cannulated drill bit for the 4.0 Standard and 5.0 Large Compression FT™ screws. Use the 5.0 mm straight, cannulated drill bit for the 7.0 X-Large Compression FT screw.

Compression FT Screw System



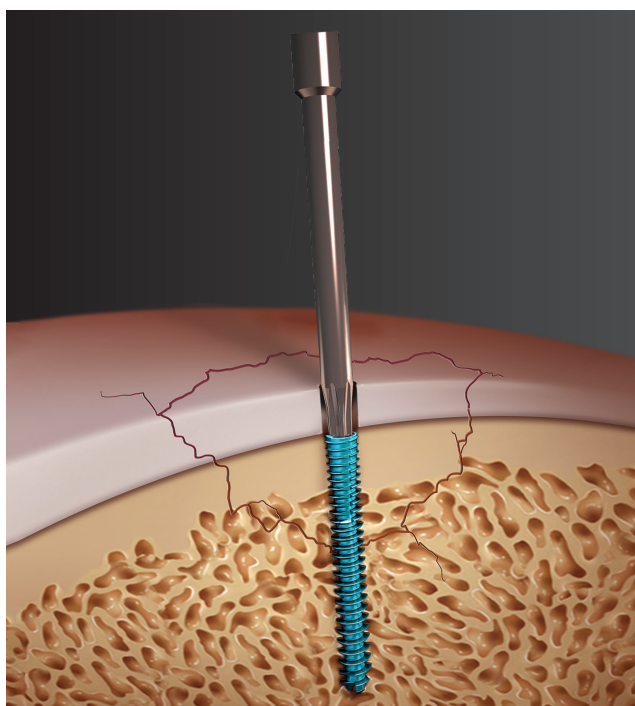
Insert the correctly sized screw with the appropriate driver. If resistance is met upon insertion, or if distraction occurs, stop, remove the screw, redrill the entire length with the appropriate cannulated drill, and reinsert the screw. Dense bone may require downsizing the screw length.



Confirm placement and length of the screw on imaging, ensuring that both leading and trailing edges of the screw are placed beneath the surface if desired. Finally, remove the guidewires.

Note: If postoperative screw removal is necessary, use the appropriate solid driver option.

Ordering Information



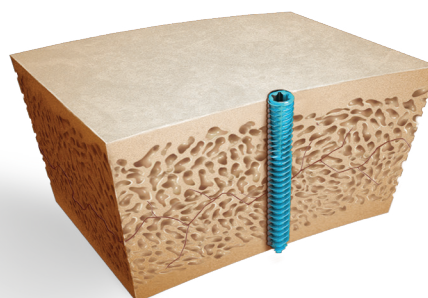
Product Description	Item Number
Compression FT Screw System, 15.5 in × 9.8 in × 6.25 in (394 mm × 249 mm × 159 mm)	AR-8738S
Instruments	
Depth Device	AR-8737-51
Obturator for Drill Guide	AR-8737-44
Percutaneous Drill Guide	AR-8737-43
Screwdriver Handle, ratcheting	AR-8950RH
Guidewire Plunger	AR-8737-56
Screw Holding Forceps	AR-8941F
Percutaneous Pin Clamp	AR-8737-57
Compression FT Screw System Instrument Case	AR-8738C
2.5 Micro Compression FT™ Screw Instruments	
Driver, cannulated, 1.5 mm hex	AR-8737-37
Driver, solid, 1.5 mm hex	AR-8737-45
Profile Drill, micro	AR-8737-46
Parallel Drill Guide	AR-8737-48
Screw Extractor/Trephine	AR-8737-59
3.5 Mini Compression FT™ Screw Instruments	
Driver, T10 hexalobe, cannulated	AR-8737-38
Driver, T10 hexalobe, solid	AR-8950SD-10
Profile Drill, mini	AR-8737-47
Parallel Drill Guide	AR-8737-49
Screw Extractor/Trephine	AR-8737-59
4.0 Standard Compression FT Screw Instruments	
Driver, T10 hexalobe, cannulated	AR-8737-38
Driver, T10 hexalobe, solid	AR-8950SD-10
Profile Drill, standard	AR-8737-54
Parallel Drill Guide	AR-8737-55

Screw Extractor/Trephine	AR-8737-60
Product Description	
Item Number	
Implants (not included in set)	
2.5 Micro Compression FT Screws	
8 mm-14 mm (1 mm increments)	AR-8725-08H – 14H
16 mm-50 mm (2 mm increments)	AR-8725-16H – 50H
3.5 Mini Compression FT Screws	
12 mm-60 mm (2 mm increments)	AR-8730-12H – 60H
4.0 Standard Compression FT Screws	
16 mm-60 mm (2 mm increments)	AR-8740-16H – 60H
Disposables (not included in set)	
2.5 Micro Compression FT Screws	
Drill Bit, straight, cannulated, 2 mm	AR-8737-34
Drill Bit, straight, cannulated, 2.2 mm (hard bone option)	AR-8737-58
Guidewire w/ Trocar Tip, 0.034 in (0.86 mm), laser-marked	AR-8737-39
Guidewire w/ Double Trocar Tip, 0.034 in (0.86 mm), laser-marked	AR-8737-39KD
Guidewire w/ Trocar Tip, threaded, 0.034 in (0.86 mm), laser-marked	AR-8737-40
3.5 Mini Compression FT Screws	
Drill Bit, straight, cannulated, 2.7 mm	AR-8737-35
Guidewire w/ Trocar Tip, 0.045 in (1.1 mm), laser-marked	AR-8737-41
Guidewire w/ Double Trocar Tip, 0.045 in (1.1 mm), laser-marked	AR-8737-41KD
Guidewire w/ Trocar Tip, threaded, 0.045 in (1.1 mm), laser-marked	AR-8737-42
4.0 Standard Compression FT Screws	
Drill Bit, straight, cannulated, 3.2 mm	AR-8737-50
Guidewire w/ Trocar Tip, 0.045 in (1.1 mm), laser-marked	AR-8737-41
Guidewire w/ Double Trocar Tip, 0.045 in (1.1 mm), laser-marked	AR-8737-41KD
Guidewire w/ Trocar Tip, threaded, 0.045 in (1.1 mm), laser-marked	AR-8737-42

Optional

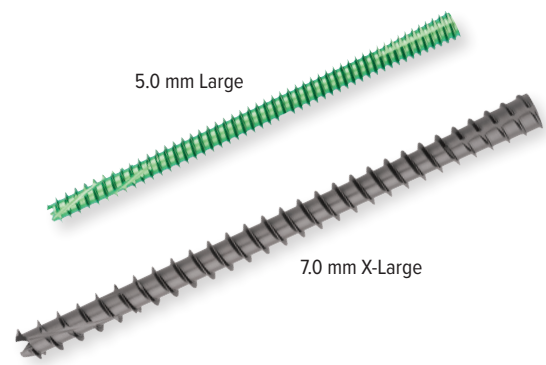
Product Description	Item Number
Compression FT Screw System Caddy, common instruments, 6 in × 9.25 in × 2.8 in (153 mm × 235 mm × 72 mm) each	AR-8738C-01
Compression FT Screw System Caddy, Micro	AR-8738C-02
Compression FT Screw System Caddy, Mini	AR-8738C-03
Compression FT Screw System Caddy, Standard	AR-8738C-04

Note: 2.5 Micro Compression FT and 3.5 Mini Compression FT screws and instrumentation are also available in the QuickFix™ cannulated screw set (AR-8737S).

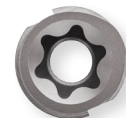


Ordering Information

Product Description	Item Number
Compression FT Screw System, 20.5 in × 9.8 in × 3.2 in (521 mm × 249 mm × 82 mm)	AR-8750S
Instruments	
Depth Device	AR-8750-01
Percutaneous Drill Guide	AR-8750-02
Guidewire Plunger	AR-8737-56
Screw Holding Forceps	AR-8941F
Sharp Hook	AR-8943-21
5.0 mm/ 7.0 mm Compression FT Instrument Case	AR-8750C
5.0 mm Large Compression FT Screws	
Driver, cannulated, T15 hexalobe	AR-8750-03
Driver, solid, T15 hexalobe	AR-8750-06
Guidewire Sleeve, 1.6 mm	AR-8750-07
Soft Tissue Protector, 1.6 mm	AR-8750-08
Drill Sleeve, 5.0 mm large	AR-8750-12
Screwdriver Handle, ratcheting, AO	AR-8970RH
7.0 mm X-Large Compression FT Screws	
Driver, cannulated, T25 hexalobe	AR-8770-01
Driver, solid, T25 hexalobe	AR-8770-04
Guidewire Sleeve, 2.4 mm	AR-8770-05
Soft Tissue Protector, 2.4 mm	AR-8770-06
Drill Sleeve, 7.0 mm X-Large	AR-8770-09
Screwdriver Handle, ratcheting, trilobe axial handle	AR-8770RH
Screwdriver Handle, ratcheting, trilobe T-handle	AR-8770TH
Implants (not included in set)	
5.0 Large Compression FT Screws	
20 mm-50 mm (2 mm increments)	AR-8750-20H-50H
55 mm-90 mm (5 mm increments)	AR-8750-55H-90H
7.0 mm X-Large Compression FT Screws	
35 mm-120 mm (5 mm increments)	AR-8770-35H-120H
125 mm-140 mm (5 mm increments) sterile	AR-8770-125HS-140HS
Disposables (not included in set)	
5.0 mm Disposable Instruments	
Guidewire w/Trocar Tip, 0.062 in (1.6 mm)	AR-8750K
Guidewire w/Trocar Tip, 0.062 in (1.6 mm), threaded	AR-8750KT
Profile Drill, 5 mm Large	AR-8750-05
Drill Bit, straight, cannulated, 3.2 mm	AR-8750-04
Drill Bit, straight, cannulated, Long, 3.2 mm	AR-8750-09
Trepine/Extractor, 5.0 mm Large Compression FT	AR-8750-11
7.0 mm Disposable Instruments	
Guidewire w/Trocar Tip, 0.094 in (2.4 mm)	AR-8770K
Guidewire w/Trocar Tip, 0.094 in (2.4 mm), threaded	AR-8770KT
Profile Drill, 7 mm X-Large	AR-8770-03
Drill Bit, straight, cannulated, 5 mm	AR-8770-02
Trepine/Extractor, 7 mm X-Large	AR-8770-08
Additional Screw Caddies Available (optional)	
Compression Screw Caddy, 5.0 mm, 7.5 in × 8.7 in × .75 in (191 mm × 221 mm × 20 mm)	AR-8750C-SC-01
Compression Screw Caddy, 7.0 mm, 7.5 in × 8.7 in × 1.9 in (191 mm × 221 mm × 49 mm)	AR-8750C-SC-02



Hexalobe T15



Hexalobe T25



This is not veterinary advice and Arthrex recommends that veterinarians be trained in the use of any particular product before using it in surgery. A veterinarian must always rely on their own professional clinical judgment when deciding whether to use a particular product. A veterinarian must always refer to the package insert, product label, and/or directions for use before using any Arthrex product. Products may not be available in all markets because product availability is subject to the regulatory or veterinary practices in individual markets. Postoperative management is patient-specific and dependent on the treating professional's assessment. Individual results will vary and not all patients will experience the same postoperative activity level or outcomes. Please contact your Arthrex representative if you have questions about availability of products in your area.

View U.S. patent information at www.arthrex.com/corporate/virtual-patent-marking

© 2020 Arthrex, Inc. All rights reserved. | www.arthrexvetsystems.com | vLT1-000058-en-US_A